

## SHOULDER COUPLINGS & FITTINGS

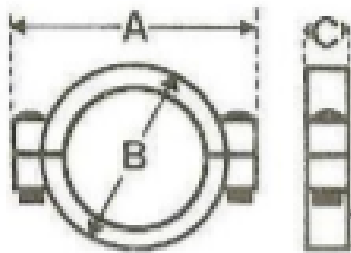
### STANDARD SHOULDER COUPLING:

#### Specifications

- Simple two-piece design with self-sealing gasket
- Quick and easy assembly
- Centralises automatically over pipe ends
- Positive sealing under pressure or vacuum
- Allows for limited expansion and contraction as well as longitudinal and angular movement
- Robust cast body
- Designed to prevent possibility of blow out / pull off

#### Material of Construction

<b>Body</b>	SG Iron
<b>Fasteners</b>	Carbon Steel, Galvanised
<b>Gasket</b>	Nitrile
<b>Coating</b>	Hot Dip Galvanised



CODE	SIZE	DESCRIPTION	WEIGHT (Kgs)	A (mm)	B (mm)	C (mm)	PRESSURE (kPa)	TEMPERATURE (°C)
GISCC050GA	50mm	KLAMBON 2 BOLT SHOULDER COUPLING	1.2	140	98	44	4000	-20 to 80
GISCC080GA	80mm	KLAMBON 2 BOLT SHOULDER COUPLING	1.6	175	131	46	4000	-20 to 80
GISCC100GAO	100mm	KLAMBON 2 BOLT SHOULDER COUPLING c/w BOLT SAVERS	2.4	205	162	50	3500	-20 to 80
GISCC150GAO	150mm	KLAMBON 2 BOLT SHOULDER COUPLING c/w BOLT SAVERS	3.2	275	214	52	3500	-20 to 80
GISCC200GA	200mm	KLAMBON 2 BOLT SHOULDER COUPLING	6.2	340	280	63	3000	-20 to 80
GISCC250GA	250mm	KLAMBON 2 BOLT SHOULDER COUPLING	9.5	410	348	64	2500	-20 to 80
GISCC300GA	300mm	KLAMBON 2 BOLT SHOULDER COUPLING	11.4	474	376	64	2500	-20 to 80
GISCC350GA	350mm	KLAMBON 3 BOLT SHOULDER COUPLING	13.5	510	393	75	2500	-20 to 80
GISCC400GA	400mm	KLAMBON 3 BOLT SHOULDER COUPLING	15.3	562	440	75	2500	-20 to 80
GISCC450GA	450mm	KLAMBON 4 BOLT SHOULDER COUPLING	21.8	632	496	78	2500	-20 to 80
GISCC600GA	600mm	KLAMBON 4 BOLT SHOULDER COUPLING	28.6	786	647	80	2000	-20 to 80

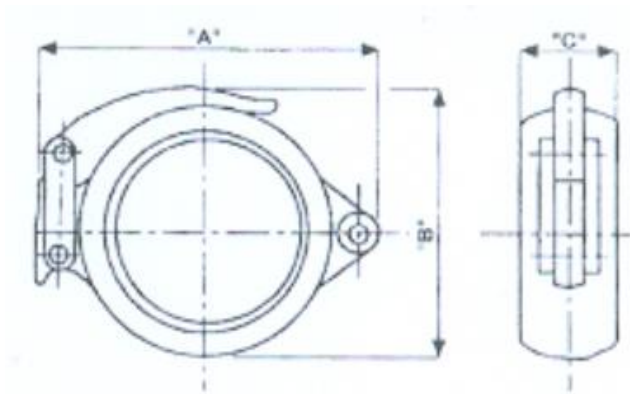
## QUICK RELEASE (TOGGLE) SHOULDER COUPLING:

### Specifications

- Extremely quick and easy assembly
- Self-sealing gasket
- Centralises automatically over pipe ends
- Allows for limited expansion and contraction as well as longitudinal and angular movement
- Robust cast steel body
- Designed to prevent possibility of blow out / pull off
- Supplied with locking clip to prevent accidental opening

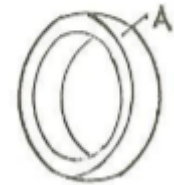
### Material of Construction

<b>Body</b>	Cast Steel
<b>Toggle Pins</b>	Carbon Steel, Galvanised
<b>Gasket</b>	Nitrile
<b>Coating</b>	Hot Dip Galvanised



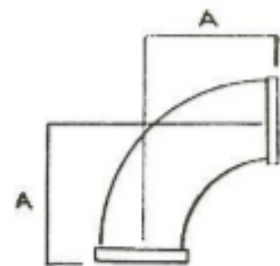
CODE	SIZE	DESCRIPTION	A (mm)	B (mm)	C (mm)	PRESSURE (kPa)	TEMPERATURE (°C)
GISCC100QR	100mm	KLAMBON QUICK RELEASE SHOULDER COUPLING	140	98	44	2500	-20 to 80
GISCC150QR	150mm	KLAMBON QUICK RELEASE SHOULDER COUPLING	175	131	46	2500	-20 to 80

## SHOULDERED WELD-ON RING:



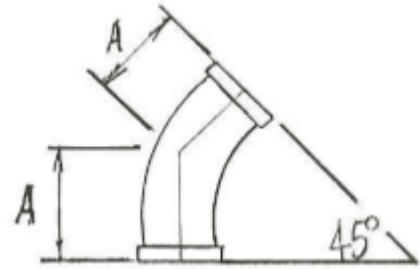
CODE	SIZE	DESCRIPTION	PIPE OD (mm)	A (mm)	APPROXIMATE WEIGHT (kg)
ESRING050	50mm	SHOULDERED WELD-ON RING, BLACK STEEL	60	16	0.2
ESRING080	80mm	SHOULDERED WELD-ON RING, BLACK STEEL	89	16	0.3
ESRING100	100mm	SHOULDERED WELD-ON RING, BLACK STEEL	114	17.5	0.4
ESRING150	150mm	SHOULDERED WELD-ON RING, BLACK STEEL	165	17.5	0.5
ESRING200	200mm	SHOULDERED WELD-ON RING, BLACK STEEL	219	20.5	0.7
ESRING250	250mm	SHOULDERED WELD-ON RING, BLACK STEEL	265	20.5	0.9
ESRING300	300mm	SHOULDERED WELD-ON RING, BLACK STEEL	314	20.5	1.0
ESRING350	350mm	SHOULDERED WELD-ON RING, BLACK STEEL	356	24	1.2
ESRING400	400mm	SHOULDERED WELD-ON RING, BLACK STEEL	406	25.5	1.6
ESRING450	450mm	SHOULDERED WELD-ON RING, BLACK STEEL	457	25.5	1.8
ESRING500	500mm	SHOULDERED WELD-ON RING, BLACK STEEL	508	25.5	2.0
ESRING600	600mm	SHOULDERED WELD-ON RING, BLACK STEEL	610	25.5	2.5

## SHOULDERED 90° ELBOWS:



CODE	SIZE	DESCRIPTION	PIPE OD (mm)	A (mm)	APPROXIMATE WEIGHT (kg)
GES05090T	50mm	SHOULDERED GALVANISED 90° ELBOW	60	83	0.9
GES08090T	80mm	SHOULDERED GALVANISED 90° ELBOW	89	108	2.4
GES10090T	100mm	SHOULDERED GALVANISED 90° ELBOW	114	127	3.0
GES15090T	150mm	SHOULDERED GALVANISED 90° ELBOW	165	165	9.0
GES20090T	200mm	SHOULDERED GALVANISED 90° ELBOW	219	197	12.5

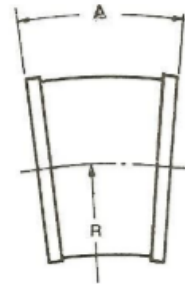
## SHOULDERED ELBOWS:



CODE	SIZE	DESCRIPTION	PIPE OD (mm)	A (mm)	APPROXIMATE WEIGHT (kg)
GES05045T	50mm	SHOULDERED GALVANISED 45° ELBOW	60	60	0.5
GES08045T	80mm	SHOULDERED GALVANISED 45° ELBOW	89	62	1.4
GES10045T	100mm	SHOULDERED GALVANISED 45° ELBOW	114	70	2.4
GES15045T	150mm	SHOULDERED GALVANISED 45° ELBOW	165	100	5.1
GES20045T	200mm	SHOULDERED GALVANISED 45° ELBOW	219	110	12.3
GES05030T	50mm	SHOULDERED GALVANISED 30° ELBOW	60	45	0.4
GES08030T	80mm	SHOULDERED GALVANISED 30° ELBOW	89	47	1.2
GES10030T	100mm	SHOULDERED GALVANISED 30° ELBOW	114	55	2.1
GES15030T	150mm	SHOULDERED GALVANISED 30° ELBOW	165	75	4.7
GES20030T	200mm	SHOULDERED GALVANISED 30° ELBOW	219	110	8.9
GES05022T	50mm	SHOULDERED GALVANISED 22° ELBOW	60	45	0.4
GES08022T	80mm	SHOULDERED GALVANISED 22° ELBOW	89	47	1.2
GES10022T	100mm	SHOULDERED GALVANISED 22° ELBOW	114	55	2.1
GES15022T	150mm	SHOULDERED GALVANISED 22° ELBOW	165	75	4.7
GES20022T	200mm	SHOULDERED GALVANISED 22° ELBOW	219	110	8.9

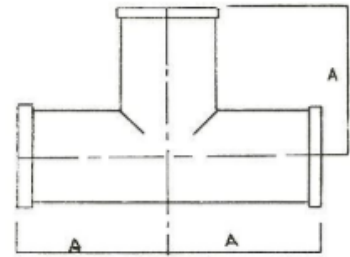
## SHOULDERED 10° SETTING PIECES:

\*\*ALSO AVAILABLE IN 5°, 15°, 22.5° AND 30°



CODE	SIZE	DESCRIPTION	PIPE OD (mm)	A (mm)	APPROXIMATE WEIGHT (kg)
GSP05010T	50mm	SHOULDERED GALVANISED 10° SETTING PIECE	60	78	0.5
GSP08010T	80mm	SHOULDERED GALVANISED 10° SETTING PIECE	89	86	0.7
GSP10010T	100mm	SHOULDERED GALVANISED 10° SETTING PIECE	114	97	2.1
GSP15010T	150mm	SHOULDERED GALVANISED 10° SETTING PIECE	165	110	3.5
GSP20010T	200mm	SHOULDERED GALVANISED 10° SETTING PIECE	219	149	5.9

## SHOULDERED EQUAL TEES:

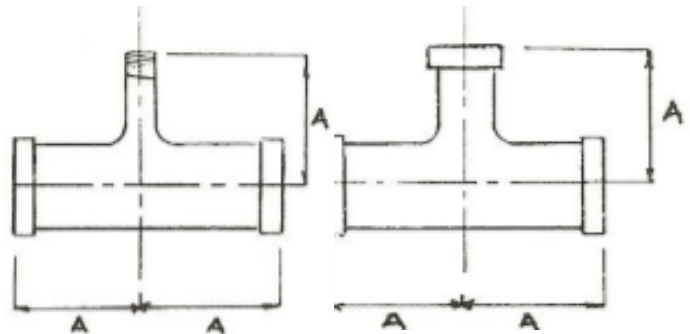


CODE	SIZE	DESCRIPTION	PIPE OD (mm)	A (mm)	APPROXIMATE WEIGHT (kg)
GTEES050T	50mm	SHOULDERED GALVANISED EQUAL TEE	60	90	0.6
GTEES080T	80mm	SHOULDERED GALVANISED EQUAL TEE	89	110	2.3
GTEES100T	100mm	SHOULDERED GALVANISED EQUAL TEE	114	140	3.5
GTEES150T	150mm	SHOULDERED GALVANISED EQUAL TEE	165	170	7.5
GTEES200T	200mm	SHOULDERED GALVANISED EQUAL TEE	219	195	14.8

## SHOULDERED REDUCING TEES:

\*\*ALSO AVAILABLE IN SHOULDERED TO SCREWED

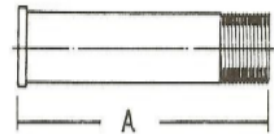
\*\*ADDITIONAL SIZES AVAILABLE ON REQUEST



CODE	SIZE (mm)	DESCRIPTION	PIPE OD (mm)	A (mm)	APPROXIMATE WEIGHT (kg)
GTR10050T	100 / 50	SHOULDERED GALVANISED REDUCING TEE	114 / 60	133	0.6
GTR10080T	100 / 80	SHOULDERED GALVANISED REDUCING TEE	114 / 89	133	2.3
GTR15010T	150 / 100	SHOULDERED GALVANISED REDUCING TEE	165 / 114	165	3.5
GTR200100T	200 / 100	SHOULDERED GALVANISED REDUCING TEE	219 / 114	210	7.5
GTR200150T	200 / 150	SHOULDERED GALVANISED REDUCING TEE	219 / 165	210	14.8

## SHOULDERED TO BSP MALE ADAPTORS:

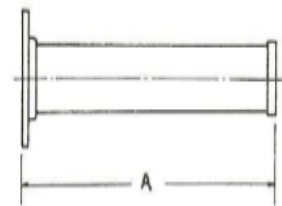
\*\*LONGER LENGTHS AVAILABLE ON REQUEST



CODE	SIZE	DESCRIPTION	PIPE OD (mm)	A (mm)	APPROXIMATE WEIGHT (kg)
DSHSCA050	50mm	SHOULDERED TO BSP MALE ADAPTOR GALVANISED	60	75	0.5
DSHSCA080	80mm	SHOULDERED TO BSP MALE ADAPTOR GALVANISED	89	99	0.9
DSHSCA100	100mm	SHOULDERED TO BSP MALE ADAPTOR GALVANISED	114	110	2.0

## SHOULDERED FLANGE ADAPTORS:

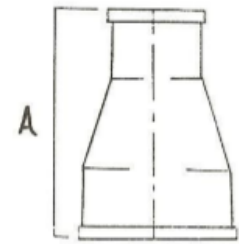
\*\*LONGER LENGTHS AVAILABLE ON REQUEST



CODE	SIZE	DESCRIPTION	PIPE OD (mm)	A (mm)	APPROXIMATE WEIGHT (kg)
DSHFA050D	50mm	SHOULDERED GALVANISED FLANGE ADAPTOR TABLE D	60	80	1.4
DSHFA080D	80mm	SHOULDERED GALVANISED FLANGE ADAPTOR TABLE D	89	105	2.0
DSHFA110D	100mm	SHOULDERED GALVANISED FLANGE ADAPTOR TABLE D	114	127	4.9
DSHFA100E	100mm	SHOULDERED GALVANISED FLANGE ADAPTOR TABLE E	114	127	4.9
DSHFA150D	150mm	SHOULDERED GALVANISED FLANGE ADAPTOR TABLE D	165	127	7.4
DSHFA150E	150mm	SHOULDERED GALVANISED FLANGE ADAPTOR TABLE E	165	127	7.4
DSHFA200D	200mm	SHOULDERED GALVANISED FLANGE ADAPTOR TABLE D	219	155	12.0
DSHFA200E	200mm	SHOULDERED GALVANISED FLANGE ADAPTOR TABLE E	219	155	12.0

## SHOULDERED CONCENTRIC REDUCERS:

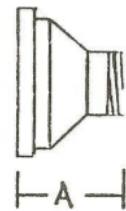
\*\*ADDITIONAL SIZES AVAILABLE ON REQUEST



CODE	SIZE (mm)	DESCRIPTION	PIPE OD (mm)	A (mm)	APPROXIMATE WEIGHT (kg)
HCRS0320T	80 / 50	SHOULDERED GALVANISED CONCENTRIC REDUCER	89 / 60	76	1.0
HCRS0420T	100 / 50	SHOULDERED GALVANISED CONCENTRIC REDUCER	114 / 60	80	1.4
HCRS0430T	100 / 80	SHOULDERED GALVANISED CONCENTRIC REDUCER	114 / 89	99	2.0
HCRS0640T	150 / 100	SHOULDERED GALVANISED CONCENTRIC REDUCER	165 / 114	104	3.0
HCRS0860T	200 / 150	SHOULDERED GALVANISED CONCENTRIC REDUCER	219 / 165	127	5.0

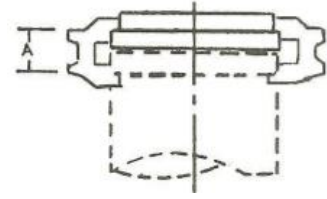
## SHOULDERED TO BSP MALE CONCENTRIC REDUCERS:

\*\*ADDITIONAL SIZES AVAILABLE ON REQUEST



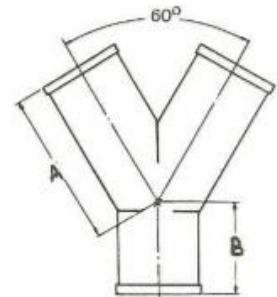
CODE	SIZE (mm)	DESCRIPTION	PIPE OD (mm)	A (mm)	APPROXIMATE WEIGHT (kg)
DCS08050S	80 / 50	SHOULDERED TO BSP MALE GALVANISED CONCENTRIC REDUCER	89 / 60	96	1.4
DCS10050S	100 / 50	SHOULDERED TO BSP MALE GALVANISED CONCENTRIC REDUCER	114 / 60	96	3.5
DCS10080S	100 / 80	SHOULDERED TO BSP MALE GALVANISED CONCENTRIC REDUCER	114 / 89	96	4.0

## SHOULDERED BLANK ENDS:



CODE	SIZE	DESCRIPTION	PIPE OD (mm)	A (mm)	APPROXIMATE WEIGHT (kg)
CBLAGS050	50mm	SHOULDERED GALVANISED BLANK END	60	26	0.6
CBLA05025	50mm	SHOULDERED GALVANISED BLANK END TAPPED 25mm	60	26	0.4
CBLAGS080	80mm	SHOULDERED GALVANISED BLANK END	89	26	0.9
CBLAGS100	100mm	SHOULDERED GALVANISED BLANK END	114	26	1.4
CBLA10025	100mm	SHOULDERED GALVANISED BLANK END TAPPED 25mm	114	26	1.2
CBLA10050	100mm	SHOULDERED GALVANISED BLANK END TAPPED 50mm	114	26	1.0
CBLAGS150	150mm	SHOULDERED GALVANISED BLANK END	165	26	2.4
CBLA15025	150mm	SHOULDERED GALVANISED BLANK END TAPPED 25mm	165	26	2.2
CBLA15050	150mm	SHOULDERED GALVANISED BLANK END TAPPED 50mm	165	26	2.0
CBLAGS200	200mm	SHOULDERED GALVANISED BLANK END	219	30.5	5.9

## SHOULDERED "Y" PIECES:

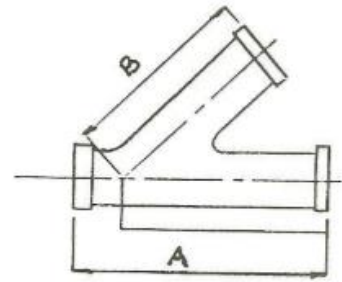


CODE	SIZE	DESCRIPTION	PIPE OD (mm)	A (mm)	B (mm)	APPROXIMATE WEIGHT (kg)
.	50mm	SHOULDERED GALVANISED "Y" PIECE	60	165	89	2.5
.	80mm	SHOULDERED GALVANISED "Y" PIECE	89	229	127	4.9
.	100mm	SHOULDERED GALVANISED "Y" PIECE	114	279	127	8.0
.	150mm	SHOULDERED GALVANISED "Y" PIECE	165	330	152	14.0
.	200mm	SHOULDERED GALVANISED "Y" PIECE	219	381	178	28.0



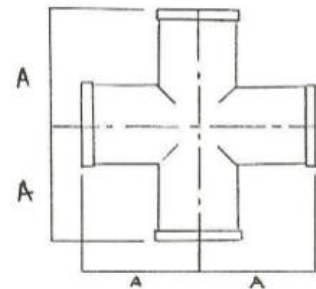
## SHOULDERED 45° ANGLE TEES:

\*\*REDUCING, SCREWED AND FLANGED BRANCHES AVAILABLE ON REQUEST



CODE	SIZE	DESCRIPTION	PIPE OD (mm)	A (mm)	B (mm)	APPROXIMATE WEIGHT (kg)
GTOFF050T	50mm	SHOULDERED GALVANISED 45° ANGLE TEES	60	215	89	3.2
GTOFF080T	80mm	SHOULDERED GALVANISED 45° ANGLE TEES	89	279	127	4.2
GTOFF100T	100mm	SHOULDERED GALVANISED 45° ANGLE TEES	114	343	115	11.8
GTOFF150T	150mm	SHOULDERED GALVANISED 45° ANGLE TEES	165	394	115	19.6
GTOFF200T	200mm	SHOULDERED GALVANISED 45° ANGLE TEES	219	470	140	26.0

## SHOULDERED EQUAL CROSS:



CODE	SIZE	DESCRIPTION	PIPE OD (mm)	A (mm)	APPROXIMATE WEIGHT (kg)
.	50mm	SHOULDERED GALVANISED EQUAL CROSS	60	87	2.0
.	80mm	SHOULDERED GALVANISED EQUAL CROSS	89	108	.
.	100mm	SHOULDERED GALVANISED EQUAL CROSS	114	133.5	.
.	150mm	SHOULDERED GALVANISED EQUAL CROSS	165	165	.
.	200mm	SHOULDERED GALVANISED EQUAL CROSS	219	197	.